

From your Headteacher

*It is very important that you make the right decisions in choosing the subjects you will study in years 10 and 11. This booklet is intended to give you a starting point for making those decisions. It won't give you all the answers; you will also need to talk to your teachers to get all the information you need. The most important thing is to think carefully and honestly about what you are good at, and what you enjoy, as well as thinking about what you might like to do in the future. Your option choices are about **you**, so think carefully, ask the right questions, and find out what you need to know, **before** you are asked to make a final decision.*

Good Luck!



Andy Rehling

EXAMINATION BOARDS

Abbreviations	Examination Board
AQA EDEXCEL OCR WJEC	Assessment & Qualification Alliance EDEXCEL London Examinations Oxford & Cambridge & RSA Welsh Joint Education Consortium

CURRICULUM CHOICES FOR KS4 **MAKING YOUR CHOICES.**

You will see from the Curriculum Choices table that there is a mixture of subjects in columns that you can choose from. Some are traditional GCSE courses in subjects which you will recognise and others that will be new to you. You will also notice that some subject are applied courses these are Double Award Courses – **this means that they are worth two GCSEs.**

The sample options form that is in this booklet is just to give you an idea of the choices available to you. You will be given the 'real' form in a couple of weeks.

You can follow different pathways when you make your choices. These are:

1. You will choose 5 single award GCSE subjects. (E.g. French, IT, Art, Sociology & Media)
2. You will choose 1 double award subject. (E.g. Double Health & Social Care); 3 single subjects (e.g. Geography, Business & Communication and PE).
3. You will choose 2 double award subjects and 1 single subject (E.g. Public Services, History & Construction)
4. You will choose V.I.P and a total of 4 GCSEs

Whatever pathway you choose, you will also take English, Maths, 21 Century Science and Core PE. You need to think carefully about the kind of things you want to do in the future – it is unlikely that you know exactly what career you want to follow. However, when you make your choices, you must make sure that you do not close any options that you may want to follow later.

Rules to follow:

- If you choose BTEC Business & IT, you should **NOT** choose Business & Communication or IT.
- You should **NOT** take **BOTH** Art & Photography.
- At Mayfield we recommend students to learn a language.
- You should **ONLY** take Spanish if you have studied it in Year 9
- You should **ONLY** take Urdu if you can speak, read and write it to a good standard
- You will **ONLY** be allowed to take Triple Science if you are currently working at **Level 6** and reach **Level 7** by Easter 2012.
- We would encourage students to take a Humanities subject
- We would advise students to take only **ONE** technology subject.

If you don't know what you want to do in the future, it is important that you study a range of different subjects.

KS4 OPTIONS PROCESS TIMETABLE

DATE	ACTIVITY
Thursday 17 November 2011.	Options Day Extended Options Assembly (Booklet will be given out) GCSE Taster lessons
Wednesday 23 November 2011	Options Evening for Parents and Students (7.00pm start)
Thursday 8 December 2011	Year 9 Curriculum Evening. Members of senior staff will be available to discuss options with students and parents/carers.
Friday 9 December 2011.	OPTION FORM TO BE RETURNED TO MISS L CAMPBELL

CORE SUBJECTS



English Language & Literature

English and English Literature will encourage students to be inspired and challenged by a broad range of multimodal texts. The new curriculum aims to prepare students for future careers and further education by developing reading, writing and speaking and listening skills. Students will read a wide range of texts; have the opportunity to write for a variety of purposes; and study the influence context has on spoken language.

English Language and Literature

At the end of the two year course students will achieve two GCSEs; one for English Literature and one for English Language.

Students will be assessed on the following:

Speaking and Listening (English Language only)

Presenting, discussing and listening creatively.

Understanding Written Texts and Writing Creatively

Students will read a range of literary texts including prose, poetry and drama. Texts will be drawn from literary heritage and there will also be opportunities to explore texts from other cultures. In addition students will produce a variety of creative texts.

Spoken Language Study

Students will understand variations in spoken language, explaining why language changes in relation to contexts as well as evaluate the impact of spoken language choices in their own and others' use. Students will undertake language investigations and peruse their own interests.

Assessment

This course will be assessed through written exams and a range of written and spoken coursework.

English Language		English Literature	
Examination	40%	Examination	40%
Controlled Assessment	40%	Controlled Assessment	60%
Speaking and Listening	20%		

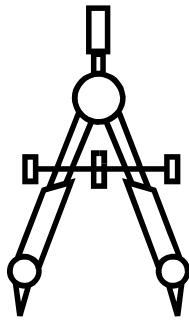
English GCSE

GCSE English will be available for students who do not want to complete their GCSE in English Literature and Language. Initially, all students will be entered for both GCSE English Language and Literature. As you may notice, the subject content for English and English language crosses over therefore, the decision to opt out of Literature can be made late in January of Year 11, however students may only opt out of English Language and Literature only after consulting with their teacher, Head of Year and Head of Department.

Who can I talk to about it?

Miss Anderson





MATHEMATICS

EDEXCEL 2540

What will I study?

- Using and Applying Mathematics
- Number and Algebra
- Shape and Space
- Data Handling

Assessment:

- Linear exam
- Calculator and non calculator papers

Grades I can get at each tier are:

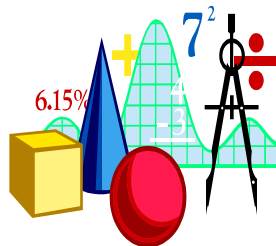
- Higher D to A*
- Foundation G to C

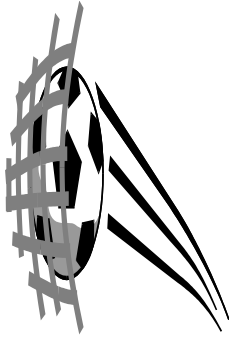
Do I need it?

Mathematics is a compulsory subject at GCSE level. Every college and employer asks for a pass in this.

Who can I talk to about it?

- Any Maths teacher





PHYSICAL EDUCATION (CORE)



What will I study?

Recreational Sport:

- ▶ Students will participate in an activity regularly in the variety of physical activities offered. Students get to choose between two options, which rotate every six weeks.
- ▶ Students are given opportunities to lead and demonstrate their knowledge and ability through a variety of approaches, e.g. umpire, referee, coach & captain in sport education lessons.

The course will compliment the requirements of parts of Key Stage 4 of the National Curriculum for physical education

Who can I ask about it?

Miss J Campbell



GCSE SCIENCE

TWENTY FIRST CENTURY science

The GCSE Science courses offered are aimed to suit every kind of learner in our school. There are various routes that can be taken over the course of 2 years. At the end of year 11 students will leave Mayfield School with 2 GCSEs or equivalent.

YEAR 10

In year 10 students will follow the following programmes of study, which will either be 1 GCSE following the Science A route or they will begin the triple science or THE BTEC Science route.

Science a course:

COURSE OVERVIEW ROUTE 1	OR	COURSE OVERVIEW ROUTE 2	ASSESSMENT OVERVIEW (APPLIES TO BOTH ROUTE 1 AND ROUTE 2)		
A161 (BIOLOGY A) Module B1: You and your genes Module B2: Keeping healthy Module B3: Life on Earth		A141 (SCIENCE A) Module B1: You and your genes Module C1: Air quality Module P1: The Earth in the Universe	60 marks 1 hour written paper	25% of total GCSE	Three written exams, assessed externally by OCR, each of which: <ul style="list-style-type: none"> • is offered in Foundation and Higher Tiers • uses both objective style and free response questions (there is no choice of questions) • assesses the quality of written communication
A171 (CHEMISTRY A) Module C1: Air quality Module C2: Material choices Module C3: Chemicals in our lives : risks & benefits		A142 (SCIENCE A) Module B2: Keeping healthy Module C2: Material choices Module P2: Radiation and life	60 marks 1 hour written paper		
A181 (PHYSICS A) Module P1: The Earth in the Universe Module P2: Radiation and life Module P3: Sustainable energy		A143 (SCIENCE A) Module B3: Life on Earth Module C3: Chemicals in our lives : risks & benefits Module P3: Sustainable energy	60 marks 1 hour written paper		
A144 (SCIENCE A) Controlled assessment		A144 (SCIENCE A) Controlled assessment	64 marks Approx 6–7 hours		

TRIPLE SCIENCE COURSE:

BIOLOGY:

UNIT A161: B1 – You and your Genes, B2 – Keeping Healthy, B3-
Life on Earth

UNIT A162: B4 – The processes of life, B5 – Growth and
Development, B6 – Brain and mind

UNIT A163: B7 – Further biology

UNIT A164 – Controlled Assessment

CHEMISTRY:

UNIT A171: – C1 – Air Quality, C2 – Material choices, C3 –
Chemicals in our lives

UNIT A172: C4 – Chemical patterns, C5 – Chemicals of the natural
environment, C6 – Chemical synthesis

UNIT A173: C7 – Further chemistry

UNIT A174: Controlled Assessment

PHYSICS:

UNIT A181: P1 – The Earth in the Universe, P2 – Radiation and
Life, P3 – Sustainable energy

UNIT A182: P4 – Explaining motion, P5 – Electric circuits, P6 –
Radioactive materials

UNIT A183: P7 – Further physics

UNIT Q184: Controlled Assessment

ALL UNITS CARRY A 25% WEIGHTING.



BTECs are work-related qualifications suitable for a wide range of students, built to accommodate the needs of employers and allow progression to university.

They provide a practical, real-world approach to learning without sacrificing any of the essential subject theory.

The units studied are:

Unit 1: Chemistry and Our Earth
Unit 2: Energy and Our Universe
Unit 3: Biology and Our Environment
-these are all mandatory.

Assessment:

Students are assessed entirely in class with regular assignments.

Students who gain a pass for all assignments by the end of year 11 will generally achieve the equivalent of **2 GCSE C grades**.

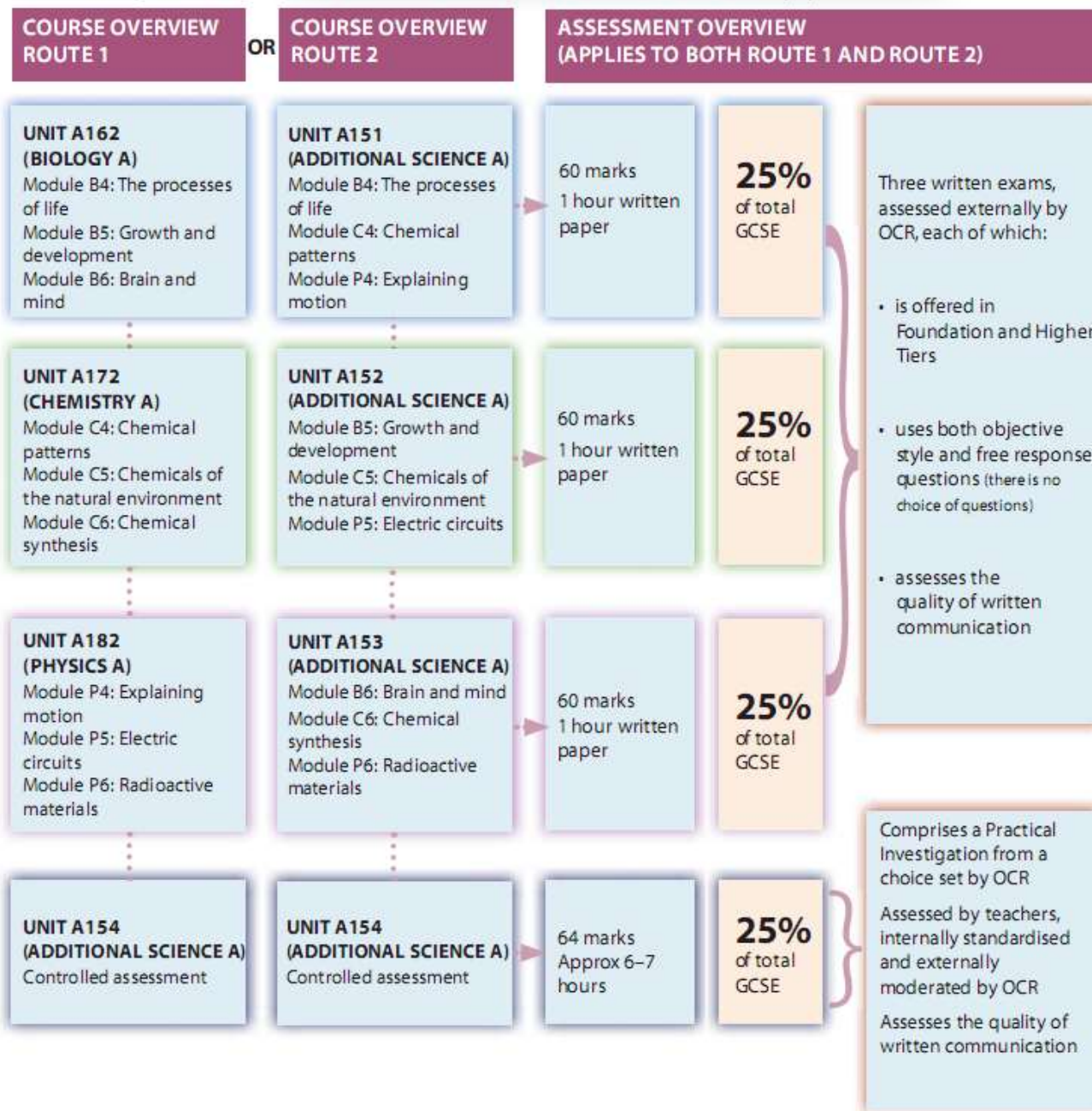
Students who gain merit for all assignments by the end of year 11 will generally achieve the equivalent of **2 GCSE B grades**.

Students who gain distinction for all assignments by the end of year 11 will generally achieve the equivalent of **2 GCSE A grades**.

Year 11

In year 11 students who opted for the Science A course will complete their 2nd GCSE qualification by studying the Additional Science A course shown below.

Additional Science a course:

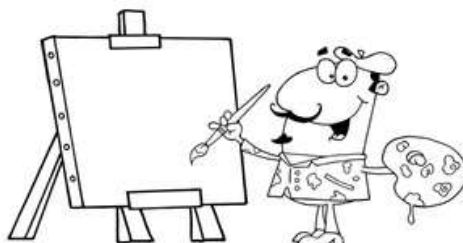


IF YOU HAVE ANY QUERIES PLEASE FEEL FREE TO CONTACT EITHER MR W WRIGHT (HEAD OF SCIENCE) OR MS F WELCH (KS4 CO ORDINATOR).

OPTION SUBJECTS

Art and Design

Edexcel (2AD01)



What will I study?

- The GCSE art course is designed to allow students opportunities to explore a range of 2D and 3D media. Students can expect to draw, paint, print and explore construction and modelling techniques.
- Students are expected to gain knowledge of the work of a range of artists. Independent research is an important element of the course. Pupils are encouraged to make links between their own work, and the work of artists, designers and crafts people.

Assessment

- Students will develop their skills whilst completing a coursework portfolio. They are required to present exploratory art sheets which clearly demonstrate independent research, formation of personal ideas, developments and final art outcomes. Pupils in Year 10 are required to sit a five hour exam in the summer term. In Year 11, students will undertake a 45 hour Controlled Assessment from September to December. The Controlled Assessment culminates in pupils sitting a ten hour mock examination.

60% of the final GCSE mark is awarded for work submitted for the Controlled Assessment.

- Students are presented with the final examination paper in February of Year 11. Eight weeks preparation time is allowed prior to the final exam which is ten hours in duration. Pupils are expected to use preparatory time to thoroughly explore the exam theme through initial research, idea developments and final outcomes.

40% of the final GCSE mark is awarded for Preparatory Studies and the final artwork produced during the examination.

Why should I take this subject?

There are many reasons for opting for Art, for example:

- you enjoy the subject
- you like working creatively & imaginatively and hope to develop your skills further
- you are interested in experimenting with a broader range of artists' materials
- you would like to learn about famous artists and understand why their work is considered important
- you would like to pursue a career that requires artistic skill, for example:

Architecture, Interior Design, Fashion Design, Jewellery Design, Textile, Graphic or Product Design. Hairdressing or Beauty.

Make-up for Film, Costume or Theatre & Set Design. Illustrator or Graphic Designer. Media, Advertising & Marketing. Designer of Websites or Computer Games. Film or Photography.

Who can I talk to about it?

Mrs Schofield-Brown, Mrs. Cooper-Keeble or Mrs Marongui

GCSE Business Communications



Unit 1 - Introduction to Small Business

Weighting: 25%

Assessed: Examination

Topics: 1.1 Spotting a business opportunity
1.2 Showing enterprise
1.3 Putting a business idea into practice
1.4 Making the start-up effective
1.5 Understanding the economic context

Unit 2 - Investigating Small Business

Weighting: 25%

Assessed: Controlled assessment

Topics: - application of unit 1 topics to research task

Unit 4 – Business Communication

Weighting: 50%

Assessed: Exam

Topics: 4.1 Communication
4.2 Communication with stakeholders
4.3 Business communication tools
4.4 Communicating via the internet

Why should I take this subject?

- ❖ If you are interested in a career in business/retail management.

Who can I talk to?

- ❖ Ms C Botha or Mr J Harley



Business & ICT BTEC Extended Certificate

BTEC Level 2 Extended Certificate

Head of Faculties:	Ms C Botha, Ms N Byrne
Awarding Body:	Edexcel
Length of course:	2 Year Course

Why should I take this subject?

This is an excellent introductory course to the business world. It is vocational and will link your studies in the real world. Project and group will play an important part of this course. It will also provide students with a range of transferable skills which can be applied to their other studies, as well as the world of work.

The Course

The course includes such units as "Exploring Key Business Pressures", "Spreadsheet Modelling", "Introduction to Business Activity", "Presenting Information Using IT" and "Business IT Skills".

Assessment

This course is 100% coursework and comprises of the following units:

Compulsory Units

- Exploring Business Purposes
- Developing Customer Relations
- Investigating Financial Control

Specialist Units

- Business Communication
- Spreadsheet Modelling
- Introduction to Business Activity
- Presenting Information Using IT

Career Pathways

The knowledge and skills gained in this course will be fundamental to the success of any business and is an accepted route onto the AS/A2 ICT, AS/A2 Business Studies and BTEC Level 3 National Diploma in Business.

Who can I talk to?

Ms Byrne and Ms Botha

Construction



Level 1 Certificate in Basic Construction Skills (6218-03)

This is a school based Vocationally Related Qualification (VRQ) run in partnership with local schools. Learners will study modules that count towards the C&G Level 1 Certificate in Basic Construction Skills. To gain the full qualification students must complete 13 Credits which will require a range of different practical construction tasks to be completed.

Health & Safety

As Health & Safety underpins everything that takes place in the Construction Industry the course will begin with studying for a *Level 1 Award in Health & Safety at Work*. On the satisfactory completion of a forty question multiple choice exam students will receive a certificate from the British Safety Council.

Aims of the course:

- To develop “real world” practical skills relevant to life
- To prepare students for further training in the Construction Industry
- To ensure young people are able to make informed choices about their future career.

What will I study?

As many of the following as possible will be included in the course:

- **Painting and decorating** - *including preparation, application and cleaning up*
- **Brick and Block work skills** – *to include setting out, handling & storing materials, preparation of mortar, and laying bricks and blocks to a line*
- **Basic Tiling** – *including preparation, setting out, cutting out, fixing and grouting to both walls and floors*
- **Simple Plumbing** – *to include use of push fit fittings for both supply and waste water. Fixing of guttering is also included.*
- **Health & Safety** – *to include safe handling, how to deal with accidents, signs & symbols and Risk Assessment*
- **Essential number & written work for builders** – *including accurate measuring, calculating quantities of materials and simple costing of materials*

How will I be taught?

The course open to boys and girls and is primarily a “hands-on” multi-skills course designed to give students experience in a number of construction trade activities. There is a need for some written work but approximately 70% of the course is practical. Personal Protective Equipment (PPE) will be provided as the wearing of it is essential for the course.

How will I be assessed?

Most assessment is based on practical work. This means that students pass that part of the course when he or she has become *competent* in it and met the required standards. Photo-evidence sheets will need to be completed which show their work and understanding of it. There will also be written tests and learners will create a portfolio using photographs, tutor comments and assessments. Lesson time will be that usually available for two GCSE subjects.

Future Education and Employment

Many people enjoy construction courses for the experience alone. For those who want to progress in the industry, apprenticeships and college courses in single craft areas are available. The main opportunities are in craft occupations. Future careers in other aspects of construction, civil engineering and architecture may also open up after further study.

How can I do well in this subject?

Learners need to be prepared to work hard and behave in a mature and responsible manner, health and safety issues are essential to this course. Young people will enjoy the course if they accept that it is not all “hands-on” and that class-based work and tests are necessary. Some activities will also be outside during the winter. This is part of working in the construction industry.

Useful Web Sites

Health & Safety –

www.britishsafetycouncil.org/schools

Details of the qualification –

www.cityandguilds.com and then search for the relevant qualification

Careers in Construction -

www.bconstructive.co.uk



Who should I talk to?

Mr. W Reynolds or Mrs. W Webb



Questionnaire for Construction Course

Name Form

I fully support my child's interest in studying the



Level 1 Introductory Certificate in Basic Construction Skills

Signed Date
Parent/Guardian

Give up to six reasons why you want to do this course and how it would benefit you

1.
.....
.....
.....
.....

2.
.....
.....
.....
.....

3.
.....
.....
.....
.....

4.
.....
.....
.....
.....

5.
.....
.....
.....
.....

6.
.....
.....
.....
.....

DESIGN & TECHNOLOGY

Overview of courses

This department offers four courses which lead to a GCSE qualification. These courses provide opportunities for candidates to develop an awareness of the nature and importance of Design and Technology in our rapidly changing world. Students will develop skills of creativity and critical analysis through making links between the principles of good design, existing solutions and technological knowledge. All courses are worthwhile whether they wish to pursue design studies in the future or whether it will be their last experience of studying the subject.

Course Specifics

D & T: Food Technology

OCR Syllabus J302

This particular specification aims to promote the careful and thoughtful use of ingredients and components to encourage the development of a wide range of skills and knowledge to produce creative, innovative food products. Students will learn how to apply creative, technical and practical skills as they design and make quality food-based products.

D & T: Graphics

OCR Syllabus J303

This particular specification aims to promote the careful and thoughtful use of graphic materials, namely paper, card and board, foam board, sheet plastics, rigid foam and joining materials. Students will learn how to apply creative, technical and practical skills as they design and make quality graphics-based products.

D & T: Resistant Materials J306

OCR Syllabus

This particular specification aims to promote the careful, thoughtful and skilful use of Resistant Materials, principally Wood, Metal, Plastics, composite, smart and modern materials and associated pre-manufactured items and components. Students will learn how to apply creative, technical and practical skills as they design and make quality products.

D & T: Textiles Technology Syllabus J307

OCR

This particular specification aims to promote the careful and thoughtful use of fibres and fabrics and associated pre-manufactured items such as fastenings, threads, beads, ribbon, laces, interfacings, etc. Students will learn how to apply creative, technical and practical skills as they design and make quality textiles-based products.

Structure of all courses

YEAR 10

Unit 1: Introduction to Designing and Making – 20hours Controlled Assessment

- Developing research and investigation skills
- Developing drawing skills
- Modelling
- Evaluating process.

Unit 2: Sustainable Design – 1hour Written Examination

- Consideration of products
- Consideration of the environment
- Consideration of society and the economy.

YEAR 11

Unit 3: Making Quality Products – 20hours Controlled Assessment

- Designing for a need
- Working with tools and equipment
- Evaluating the product.

Unit 4: Technical Aspects of Designing and Making – 1hour 15mins Written Examination

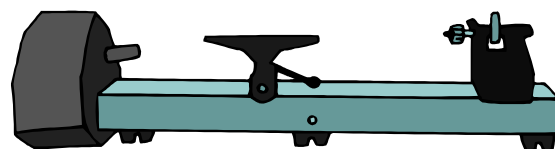
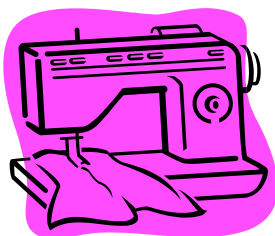
- Working with tools and materials
- Selecting processes
- Designing for success.

Assessment in all courses:

Following a Unitised Course Structure, pupils will complete 2 Units (50% of the GCSE) per year.
Weightings: **Unit 1** = 30%; **Unit 2** = 20%; **Unit 3** = 30% and **Unit 4** = 20%

Contact

Speak to Mr N Reynolds or visit www.ocr.org.uk for more information





DRAMA EDEXCELL SYLLABUS 2DRO1

What Will I study?

- ~ Plays, scripts, poems, and improvisations
- ~ Explore historical, social, political and cultural issues
- ~ Perform Drama to a live audience
- ~ Theatre genres, naturalism and physical theatre.
- ~ You are expected to attend the theatre and write a theatre review.

Assessment:

- ~ Practical Internal Assessment = 60%
- 35% practical 25% written
- Unit 1: Improvisation Unit 2: Play text study unit

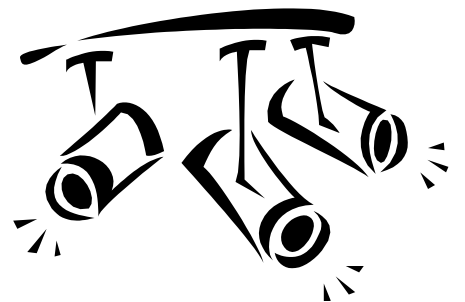
- ~ Performance – 40% rehearsed performance to an examiner

Why should I take Drama?

- ~ If you like visiting the theatre
- ~ If you enjoyed Drama at Key stage 3
- ~ If you like discussing different issues
- ~ If you have creative ideas
- ~ If you like working in groups
- ~ If you want to develop your speaking and listening skills
- ~ if you like problem solving
- ~ If you want to develop your self-confidence
- ~ If you would like a career in acting, theatre, business, law etc.

Who can I talk to about it?

- ~ Mrs Ingram
- ~ Miss Hadjigeorgiou
- ~ Miss Smith





FRENCH

EDEXCEL 1226A/C



What will I study?

- How to communicate with others in French
- How to use language imaginatively and creatively
- How to use reference materials including dictionaries
- How to develop languages skills which can be transferred to English
- How to describe, explain and justify in a detailed manner
- The culture and civilisation of other countries

Assessment:

- ~ One Listening exam (20%)
- ~ One reading exam (20%)
- ~ Three speaking activities (controlled assessed) lasting 4-6 minutes each (30%)
- ~ Two writing tasks (controlled assessed), totalling no more than 400 words (30%)

Why should I take this subject?

- ~ Studying a language will provide you with a wider range of career opportunities especially in the field of business
- ~ In every environment, speaking languages gives you access to a whole new world. Music, the Internet, cultural history, people you would never have met. This applies to the workplace as much as anywhere else.
- ~ Any language can be of use. It will depend entirely on the choice of career path. In the enlarged European Union, those speaking one or more language will enjoy more opportunities than ever in international trade and European institutions.
- ~ Recent surveys have shown that the five business languages most in demand in the UK are: French, German, Spanish, Italian and Dutch.



Who can I talk to about it?

Miss Bergé, Mr. Allison, Mrs. Rigby and Mr. Lewis



GEOGRAPHY

WJC Specification A

What will I study?

- Year 10 (Unit 1) – You will study six short human and physical geography topics which are closely linked to those you would have studied at KS3. Topics include Rivers, Climate Change, Living in an active zone, Changing populations, Globalisation and Development, and then go on a coursework trip to Walton and Frinton
- Year 11 (Unit 2) – You will complete your coursework and then study only 3 more topics, one physical and 2 human topics. Topics include Coastal processes and landforms, tourism and Retail and urban change
- You will cover a range of Geographical Skills including map reading, writing fieldwork reports, interpreting information and presenting data.

Assessment:

- **Two** written exams –
Paper 1 – Based on Unit 1 topics. **It is done at the end of year 10.** (40%)
Paper 2 – Based on the Unit 2 topics. **It is done at the end of year 11.** (35%)
- **One** coursework – Based on a fieldwork investigation (25%)

Why should I take this subject?

- To learn how to read a map
- To explore and understand environmental and human issues that affects **you** and the **world** around you.
- Geography provides the employable skills like the ability to communicate, to manage and organise, to view issues from a wide perspective and work as part of a team.
- Geographers are in high demand in the banking, insurance, leisure and tourism industries, as well as in social services.

Who can I talk to about it?

Mr Mvududu, Mr Hazle or Miss Barling



HEALTH & SOCIAL CARE A DOUBLE AWARD GCSE



Health & Social Care (HSC) is for those of you who want to study a new subject in **great depth** via exciting learning challenges. We will cover aspects of human development, psychology, religion, science & social concern (charity work). **Health** is about how to keep the human body fit & vital. For this reason, **you must choose Additional Science** when you choose (HSC). **Social Care** is about how we look after our vulnerable citizens. Other good subjects to choose with HSC are; P.E., Sociology, Food Technology & Triple Science.

What will I study?

This is 100% written assessment, so you must be good at writing in Standard English & should enjoy science. A positive attitude is expected of all students who choose HSC as you will be meeting members of the public & taking part in challenging learning experiences.

Year 10

- ◆ **Health, Social Care & Early Years Provision:** needs of different groups, types of services available, work roles of health and social care services with visits to either an early years or senior citizen external setting - **controlled assessment**



- ◆ **Safeguarding & Protecting Individuals:** - aspects of practical first aid, how to report accidents, how to make a risk assessment – **ICT exam**

Year 11

- ◆ **Promoting Health & Well-being:** definitions of health & well-being, factors that affect health, how to measure & promote health - including practical sessions in the Food Technology Room & gym – **controlled assessment**



- ◆ **Understanding Personal Development & Relationships:** patterns and factors that affect growth, personal relationships, and life changes. This will include a full programme of guest speakers – **exam**
- ◆ Possibility of gaining a Junior First Aid qualification

Assessment:

- ◆ 2 controlled assessments – written up in class (60%)
- ◆ 2 written exams (40%)

HSC is not Child Care so do not choose HSC thinking that you will be learning about babies & little children for TWO years.

Work Experience:

- Year 10 Work Experience **must** be in the Care, Health or Social Care field as you will need this information for your **first controlled assessment**.

You should study this subject if:

- ◆ You want to study something exciting, new & in depth
- ◆ **You are well motivated and enjoy independent study – crucial**
- ◆ You are interested in a career in the care, health, medicine or social services
- ◆ **You would like to work with children, people with disabilities or senior citizens**
- ◆ You enjoy working with others not mentioned above
- ◆ **Your attitude to learning is that of “I will have a go & try my best” not “I can’t do it or it’s boring!” – crucial**



Learning Structure:



- Individual, pair or group work
 - Interviews with professionals e.g. Health Visitor, Social Worker, GP, Nurses
 - Role plays & Presentations
 - Discussions & Debates
 - Project work e.g. Angels Of Death
 - Subject specific DVDs & Feature Films e.g. Precious
- Study Visits to, The Holocaust Exhibition, The Life Exhibition & a care home.

Progression:

- You can continue studying in this subject area with our A/S & A2 courses in Health & Social Care
- Use your A2 grades in Health & Social Care to go to university

- There is a range of professions after A2 some of which include:

Art/Drama Therapist

Child care worker

Dietician

Physiotherapist

Teacher

GP

Health Visitor

Nursery/School Nurse

Radiographer

Speech Therapist



Where can I get more information?

- ◆ Talk to Ms Heaven, Ms L Campbell & HSC students in Yrs 10 -13
- ◆ *Make sure that you visit the information display during Options/Choices Evening - you will get all your questions answered & see good work*
- ◆ Visit the HSC folder on the P drive, folder KS4 Options for lots more information



HISTORY

WJEC Syllabus



Why should I study this subject?

If you are interested in working in journalism, law, teaching or politics (Government and Civil Service). History is also a very highly regarded subject at A Level and at University.

This is a two year course which examines:

- ❖ The United States of America, 1910-1929 - Depth
- ❖ Germany, 1929-1947 - Depth
- ❖ The United States of America, 1929-2000 - Outline

What will I study?

Paper 1 (Depth) 50% of assessment

- ❖ USA, 1910-1929
- ❖ Germany, 1929-1947

Paper 2 (Outline) 25% of assessment.

- ❖ USA 1929 - 2000

Coursework 25% of assessment

- ❖ Students are expected to submit two pieces of coursework. One is completed at the end of year 10, and the other at the start of year 11.

Students have the opportunity to investigate; Gangsters, such as Al Capone, The St Valentines Day Massacre, The Ku Klux Klan, The Vietnam War, The assassination of President Kennedy, Martin Luther King and the Civil Rights Movement, Germany in the 1st and 2nd World Wars, Adolf Hitler and the Nazi Party.

Who can I talk to about it?

- ❖ Miss Fincham, Mrs Dyer, Mrs Hazle or Ms Kavanagh



GCSE: ICT

Information and Communication Technology Edexcel 2IT01 Single Award

What will I study?

Single award :

UNIT 1

Living in a Digital World

- ✚ Explore how digital technology impacts on the lives of individuals, organisations and society.
- ✚ Learn about current and emerging digital technologies and the issues raised by their use in a range of contexts (learning and earning, leisure, shopping and money management, health and wellbeing, on the move).
- ✚ Develop awareness of the risks that are inherent in using ICT and the features of safe, secure and responsible practice.

UNIT 2

Using Digital Tools

This is a practical unit. Students broaden and enhance their ICT skills and capability.

- ✚ You will work with a range of digital tools and techniques to produce effective ICT solutions in a range of contexts.
- ✚ Learn to reflect critically on your own and others' use of ICT and to adopt safe, secure and responsible practice.
- ✚ Put into practice what you learnt about digital technology in Unit 1 to produce your own ICT solutions.

Assessment:

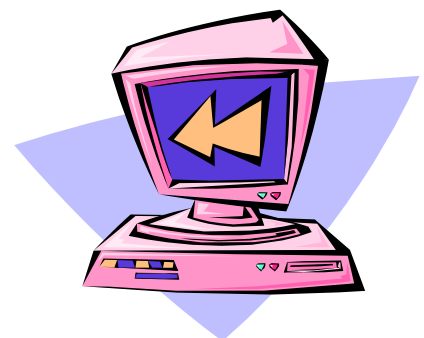
- ✚ Unit 1 written exam (40%)
- ✚ Unit 2 controlled assessment (60%)

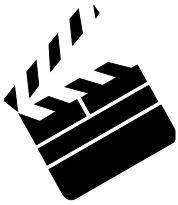
Why should I take this subject?

- ✚ ICT is an essential skill required in the majority of today's business and industry.
- ✚ If you want to develop your general ICT skills.
- ✚ If you are enjoy using ICT and are interested in the use of ICT across society.

Who can I talk to?

- ✚ Your ICT teacher
- ✚ Ms Byrne (Director of ICT)





GCSE MEDIA STUDIES

What will I study?

- * **Media Language** – the ways in which media texts are constructed. For example, how image and sound combine to make meaning in a film
- * **Audiences** – how different groups of people receive media texts
- * **Representation** - how the world is presented to us through the media
- * **Institutions** – how the media are funded and exhibited

Assessment:

The qualification is a single award GCSE, and the assessment is based on controlled assessment and examination. Throughout the two years of the course you will work on 2 units of work:

Unit 1: Investigating the Media - Exam

Based on a topic supplied before the exam with guidance and scenario.

Unit 2: Understanding the Media - Controlled assessment

Three assignments, three discrete media:

- Introductory assignment (500 words)
- Cross-media assignment (1000 words)
- Practical Production and Evaluation (700-800 words)

What skills do I need?

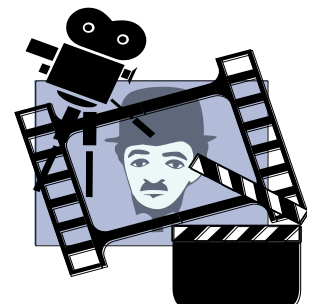
- * Analytical skills and the ability to communicate well in both speech and writing
- * Good ICT skills
- * Creativity and imagination

Why should I take Media Studies?

- * If you are interested in a career in the media
- * If you want to develop critical thought
- * If you want to develop a further understanding of life in the 21st Century
- * If you enjoy working or cooperating with others on practical work

Who can I talk to about it?

- * Mr Gilani
- * Mr. Westwood
- * Ms. McIntyre



Music BTEC

Level 2 Extended Certificate
(EDEXCEL)



BTEC Level 2 Certificate in Music

Head of Department: Miss L Troman

BTEC Co-ordinator: Mr N Paul

Awarding Body: Edexcel

Length of course: Two year course of 180 guided learning hours

Why study Music at BTEC?

The BTEC Level 2 Certificate offers a focused vocational qualification for learners who wish to follow a longer programme of study related to an aspect of employment that they might wish to move into. The BTEC course is the equivalent of **one GCSE grade at A* - C** and focuses on the practical application of music in a contemporary context and develops written/IT skills that you can use out in the real world of employment. It also allows for a student to enter into higher education vocational qualifications such as BTEC Nationals and then a degree in Popular Music, Music Technology or Music Production.

The course

Throughout the year, you will be involved in two core units and one optional unit. They are as follows:

Unit 1 - Working in the Music Industry

- You will learn about different types of organisations in the music industry and learn about job roles and employment within the industry.

Unit 2 - Professional Development in the Music Industry

- You will discover career and progression opportunities. You will design and monitor your own professional development plan.

Unit 4 Solo Musical Performance

- A performance based unit where you will be expected to showcase your musicality on your principle instrument.



Assessment

Music assessments will take place throughout all components: performing, composing and listening. Assessments take the form of live concerts, written work and recorded pieces. You are required to complete assignments continuously throughout the 2 year course.

Career Pathways

This course could lead towards careers in teaching, music therapy, music publishing, recording engineers, music technicians, performers, composers and conductors.

PHOTOGRAPHY

EDEXCEL (2PY01)

What will I study?

- The course is an introduction to digital photography. Traditional darkroom photography will not form any practical part of the work, but will be covered in theory only. Although it would be helpful if students owned digital cameras, it is not essential. The school will provide the equipment and the facilities to complete the course.
- Students will be set assignments and projects and will be expected to use digital cameras and appropriate computer hardware and software to produce creative outcomes.
- Students should also expect to spend time learning about the history and use of photography and its developing technology. This will involve written work and independent research.

Assessment:

- **Coursework (60% of the final GCSE grade is awarded for work submitted for Controlled Assessment)**

A portfolio of work consisting of two units, each based on a given theme. The submission should include research and the development of ideas as well as a portfolio of finished photographs.

- **Timed test (40% of the final GCSE grade is awarded for Preparatory Studies and a final piece of work produced under exam conditions).**

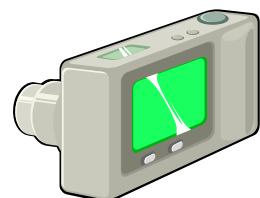
During March/April students will be given a theme, such as 'Movement' and will be expected to develop their ideas and produce a piece of work within a ten hour period.

Why should I take this subject?

- If you like creative work and exercising your imagination.
- If you feel more confident using the camera as a creative tool rather than traditional art media.
- If you would like to pursue a career in the media or the arts
- If you want to develop a worthwhile leisure interest while also gaining a qualification.

Who can I talk to about it?

- Mrs Marongui, Mrs Schofield-Brown, Mrs Cooper-Keeble
-





PHYSICAL EDUCATION

EDEXCEL Syllabus 1827

What will I study?

- ▶ How to improve your ability to plan, perform and evaluate an activity
- ▶ How the human body works – bones, joints, muscles and different body systems
- ▶ Health and fitness effects – effects of exercise, age, gender and diet
- ▶ Training – how to design and implement a personal training programme

Assessment:

- ▶ 50% Practical – 4 sports from games, dance, athletic activities, gymnastic activities and many others

You can also be assessed as a coach, official or a leader and then only be assessed in 2 sports.

- ▶ 40% Theory – 1 written exam
- ▶ 10% Analysis of Performance, plus training programme

Why should I take this subject?

- ▶ If you are interested in a career in sport and leisure
- ▶ If you are interested in leading a healthy lifestyle
- ▶ It develops key skills such as:
 - ~ Co-operation, communication and concentration

Who can I ask about it?

- ▶ Miss J. Campbell or Miss Tucker





Public Services

BTEC First Certificate

EDEXCEL



What will I study?

The BTEC First Certificate introduces learners to the work of the Uniformed Public Services and how their work affects the communities they serve. Learners are introduced to the different job types that are available within the services whilst also exploring the activities the Public Services undertake on a day to day basis. Learners will be introduced to all of the Public Services and will meet operational members from many of the Uniformed Public Services. They will also undertake a number of different enrichment activities related to the work of the services during their time on the course.

You will study three of the following units of work:

- Public Service Skills
- Uniformed Public Service Fitness
- Citizenship, the Individual and Society.
- Adventurous Activities and Teamwork for the Public Services
- The Value of Sport and Recreation in the Public Services
- Community & Cultural Awareness



Assessment:

100% Coursework – one piece for each unit, which can be presented in a number of formats.

The BTEC First Certificate is the equivalent of 2 GCSEs at grade A* - C

Why should I take this subject?

- ▶ If you are interested in a career in any of the public services.
- ▶ If you enjoy working in a team.
- ▶ If you enjoy a more practical approach to learning.



Who can I ask about it?

- ▶ Mr. Barling



Religious Education

Edexcel Syllabus 1481

What will I study?

- **Abortion** - is it ever right to destroy a potential child?
- **Euthanasia** - would you help someone to die if they asked you?
- **War** - when is it right to go to war and kill others?
- **Crime and Punishment** - should a murderer be murdered by law?
- **Marriage** - Should a couple stay married if they are not happy but they have children?
- **Religion in the media** - how do we see religious issues dealt with every day by the most manipulative in the world?

These are just a few of the topics you will look at.

You will think about and debate all the important issues of today whilst thinking about Christian and Muslim points of view, including scientific perspectives.

Why should I take this subject?

Do you...

- enjoy arguing?
- have strong opinions/beliefs?
- find other people's lives and problems interesting?
- feel strongly about what is right and what is wrong?
- want to learn about right and wrong in the eyes of the law and religion?

Then this is the course for you!!

How will I be tested?

- 2 written exams (100%)

Who can I talk to about it?

Mr Marsham, Mr Ghuman



SOCIOLOGY

AQA Syllabus 4190

What will I study?

Unit 1: (All topics are studied in this section)

1. **Studying Society** – what is sociology? The language of sociologists, social structure & issues, quantitative vs. qualitative, sampling, research methods
2. **Education**– why do we have schools, measuring educational success & attainment, hidden curriculum, education in contemporary Britain
3. **Families** – what is a family? nuclear family, decline of marriage, roles in the family, decline of marriage, alternatives to marriage

Unit 2: (Only three topics are studied from a choice of four topics in this section)

1. **Crime and Deviance** – what is crime & deviance, measuring crime, explaining criminal behaviour, social control, who commits crime
2. **Mass Media** – what are the mass media, who owns the mass media, effects on society, media stereotypes, impact of technological changes
3. **Power** – democracy in Britain, citizens & the political process, social reform, who is in control
4. **Social Inequality** – social stratification, life chances, barriers to achievement, distribution of wealth, what does it mean to be poor

Assessment: Written Exam (100%)

☺ **Unit: 1 (41901) 50% of total marks**

Unit: 2 (41902) 50% of total marks

Why should I take this subject?

- ☺ To become informed about the society you live in
- ☺ As a pathway to University
- ☺ Career in caring professions and professions working with people – e.g. Administration, Education or Social work

Who can I talk to about it?

- ☺ Mrs A. Gordon – Subject Leader
- ☺ Mr R. Mir





Spanish Edexcel



What will I study?

- How to communicate with others in Spanish
- How to use language imaginatively and creatively
- How to use reference materials including dictionaries
- How to develop languages skills which can be transferred to English
- How to describe, explain and justify in a detailed manner
- The culture and civilisation of other countries

Assessment:

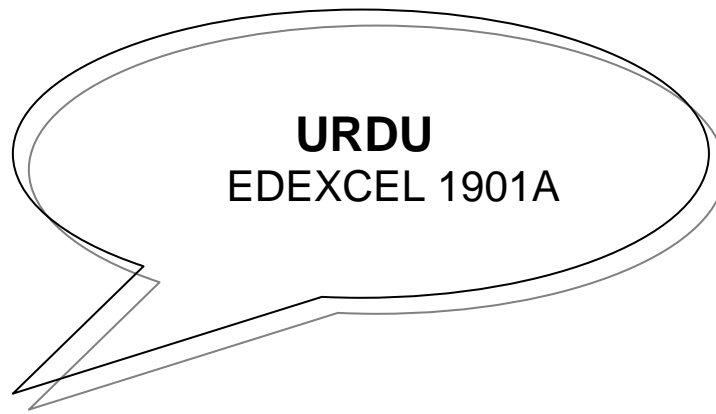
- One Listening exam (20%)
- One reading exam (20%)
- Three speaking activities (controlled assessed) lasting 4-6 minutes each (30%)
- Two writing tasks (controlled assessed), totalling no more than 400 words (30%)

Why should I take this subject?

- Spanish is very widely spoken internationally – it is the 3rd most spoken language in the world!
- 400 million people speak Spanish worldwide.
- Studying a language will provide you with a wider range of career opportunities in various fields.
- In every environment, speaking languages gives you access to a whole new world: music, the Internet, cultural history, people you would never have met. This applies to the workplace as much as anywhere else.
- Languages are a useful skill regardless of your future plans.
- Spain and Latin America are very popular holiday destinations!

Who can I talk to about it?

- Señorita Assoudi and Señor Hortet.



What will I study?

- ~ How to communicate with others in Urdu
- ~ How to use language imaginatively and creatively
- ~ How to use reference materials including dictionaries
- ~ How to develop languages skills which can be transferred to English
- ~ How to describe, explain and justify in a detailed manner
- ~ The culture and civilisation of other countries

Assessment:

- ~ Unit 1: Listening and Understanding (20%)
- ~ Unit 2: Speaking (30%) (two controlled assessed tasks)
- ~ Unit 3: Reading and Understanding (20%)
- ~ Unit 4: Writing (30%) (two controlled assessed tasks)

Why should I take this subject?

- ~ Studying a language will provide you with a wider range of career opportunities especially in the field of business
- ~ In the public service sector and local government in the UK, Urdu is needed to serve local communities effectively.

Who can I talk to about it?

- ~ Mrs Korotana



Foundation Learning

Subjects

ASDAN BRONZE/SILVER CHALLENGE

This is a course, which is based on activities rather than the usual elements of classroom learning. There is an opportunity for students to gain bronze or silver awards during the two years of study.

The course is nationally recognised by Colleges and the National Record of Achievement.

What will I study?

- There is a variety of work, there are 12 topics to choose from and each topic has a range of challenges where the student can gain points towards an award. There is a flexible approach to learning; evidence of meeting the challenges has to be collected in a portfolio. The student can complete the evidence through photographing their work, talking about their work, audio or video recordings, or written evidence. There will be a lot of work outside of the School in the local community

Who can choose the course?

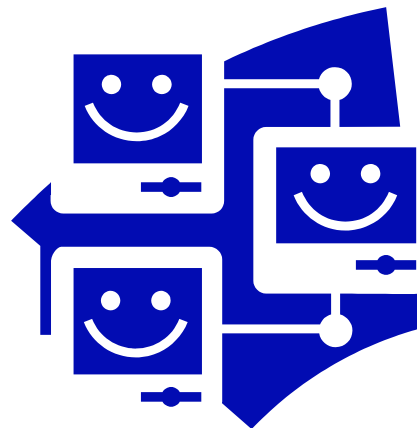
- Anyone can choose this course although final choices will be made through the option interview process. Students should talk to their teachers and parents to see if they think that this course is suitable for them

Why should I take this subject?

- Do you think you can cope with the demands of 10 GCSE subjects – would you prefer not to take a final written exam and would you rather gain certificates as you complete elements of the course?
- Do you enjoy working in a small group where you can receive more help and support?
- Will you enjoy a course that is not based entirely in the classroom?
- Can you work on your own, in a variety of ways to solve problems?

Who should I talk to?

- Mr Dixon
- Mrs Alexander-Boxall



COMBINED HUMANITIES (Certificate of Achievement)

What will I study?

- This course will be based on a wide range of topics taken from History, Geography and Sociology.

Assessment:

- Assessment will be based on a selection of coursework items, a short multiple-choice test, and an oral interview

Who should take this subject?

- This course is designed for a selected group of students who will not be expected to follow a full GCSE course in any of the four Humanities subjects

Students who successfully complete the course will be awarded a Certificate of Achievement in Humanities from the Welsh Examining Board.

Who can I talk to?

- Mr Hazle



ENTRY LEVEL ENGLISH

What will I study?

- This course is to prepare students for the Entry Level Certificate in English. The work is presented in self-contained units and is a strong motivating factor for students who respond to short-term highly structured goals

The units are organised to enable students to:

- Acquire knowledge, skills and understanding
- Apply their learning in a range of contexts

Assessment:

- 6 externally set tasks
- 6 extended pieces of coursework

Why would I take this course?

At the end of Year 10 the progress of students in English will be assessed. The English staff will identify students who are not coping with the full GCSE English course; these students will be given the opportunity to follow the entry level programme in Year 11.

Who can I talk to?

- Miss Anderson





Entry level ICT

Information and Communication Technology

Edexcel Functional skills

Functional skills will provide you with the essential knowledge, skills and understanding that will enable them to operate confidently, effectively and independently in life and work.

Functional skills are:

- ✚ applied skills
- ✚ transferable
- ✚ relevant to all contexts

What will I study?

- ✚ Word processing
- ✚ Desktop Publishing
- ✚ Internet research
- ✚ Electronic communication
- ✚ Spread sheets
- ✚ Databases

You will develop skills in a range of applications and apply these in producing a variety of digital products.

You will need to know:

- what skills are available
- when to use them
- why they are appropriate for the task
- how to apply them to achieve appropriate outcomes.

Assessment:

- ✚ Practical exam
- ✚ Witness statement

Why should I take this subject?

- ✚ ICT is an essential skill required in the majority of today's business and industry.
- ✚ If you want to develop your general ICT skills.

Students who demonstrate their capability will have the opportunity to progress from entry level to level 1 and level 2.

Who can I talk to?

- ✚ Your ICT teacher



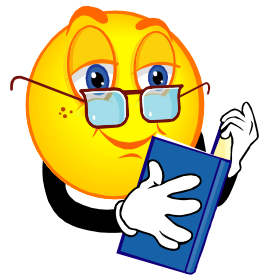
**Functional
Skills**



LANGUAGE SKILLS

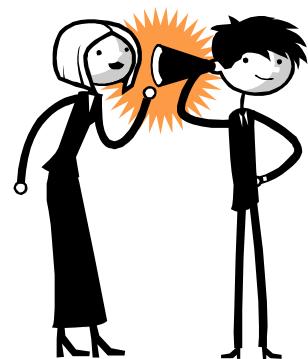
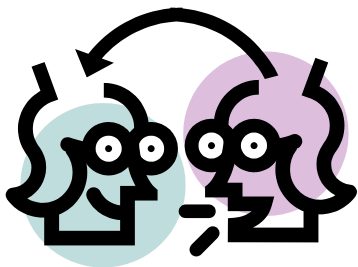
What will I study?

- This course is to prepare students for the Entry Level Certificate in Adult Literacy, Levels 1, 2 and 3.
- It is suitable for pupils who are in the early stages of learning English as an Additional language.
- Lessons support literacy in other subjects and teach skills such as note taking, skimming and scanning.
- Comprehension techniques are taught both in oral and written form.
- Grammar structures are taught to improve the pupils' ability to write in English.
- The tests that support this course are 'On Demand' tests and can be used throughout the year as soon as a student has reached a certain level.
- There are three levels to the tests and they are nationally recognised as a measure of Literacy.
- Students will be examined in Speaking, Listening, Reading and Writing Skills, but do not need to do any coursework.



Who can I talk to?

- Mrs Garland
- Mr Tomalin





STUDY SUPPORT

What will I study?

- a) Literacy, ICT, Science and numeracy skills support
- b) Entry Level English
- c) A study skills course designed to help you to learn how:
 - ~ to study effectively
 - ~ to plan your learning
 - ~ to manage your time.
- d) Help with planning essays, projects and other assignments.
- e) Additional help with some homework.
- f) The opportunity to have regular tutorial sessions with the Support Teacher to help you to:
 - ~ review your progress
 - ~ set targets
 - ~ identify areas of your learning that need extra help.
 - ~ plan your time

Why should I take this course?

- If you are someone who would benefit from work in a smaller group, where you can get individual help with your learning needs
- If you need to focus on your basic skills such as reading, spelling, speaking and listening
- The intention of the Support Course is that it literally *supports* students in the skills essential for academic success in examinations at GCSE level providing skill support as well as support for those subjects actually taken at GCSE. This is achieved either directly through special lessons set aside for help with homework, coursework or other assignments, or indirectly through the skill-based work

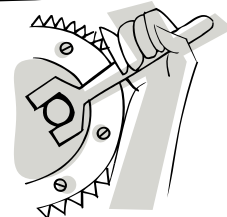
Who should I talk to?

- Mrs Garland
- Mr Tomalin
-





Vocational Inclusion Programme. (VIP)



What is the Vocational Inclusion Programme?

- The VIP Programme is run by Redbridge Business Education Partnership (ReBEP)
- The traditional VIP model consists of either a work placement or accredited course delivered by a local training provider, or a two day work placement.

Personal Coordinator

- As part of the VIP Programme, a coordinator is assigned to each school and acts as a mentor for the students.

Work Placement

- ReBEP will source a quality work placement for each student, which will be regularly checked and monitored.
- It is envisaged that over the two years the student will gain 'on the job' experience to prepare them for the world of work.

The Training Day

- ReBEP works with local training providers to provide courses in functional skills such as IT, numeracy and communication skills
- Students may also have the opportunity to complete a preparation for employment qualification.

What else will I study?

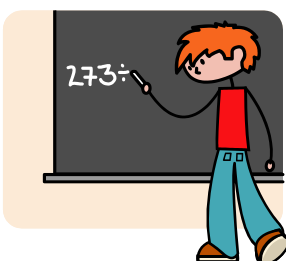
- English Language, Maths, 21 Century Science, Core PE, ASDAN and Social Skills

Who should take this course?

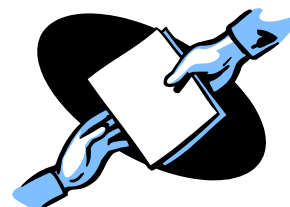
- The VIP Programme enables students, who may not be suited to the 10 GCSE method of study, to have an opportunity to explore their potential through alternative educational and vocational routes.

The benefits of the VIP Programme are:

- Student's attendance is monitored on the days they are out of school and absences are chased up.
- Organisation of quality work placements. Often students will have more than one throughout their programme.
- Health & Safety checks and risk assessments carried out in line with the Children's Act 1989 and Management of Health & Safety at Work Regulations 1989.
- Extra student support, with Project Coordinators visiting them in school, training and at their placement.
- ReBEP work towards tailoring training and work placement to the student's needs.
- Programme builds self esteem and confidence for students more suited to a vocational pathway.
- An opportunity to produce a CV in the Link FM studio.
- Real work experience, which they could put on their CV.
- An opportunity to get a reference from an employer.
- The chance to get ahead of their peers in the world of work



Who should I talk to about it?
Miss L Campbell



Useful

Websites

To help you with your options:

www.14pluspathways.com has lots of information on subjects and schools and has links to documents which help with choices in year 9 - i.e. 'which way now'.

www.connexions-direct.com/jobs4u is an excellent research website where young people can type in a career in the search bar and it comes up with information about the job, the salary, the skills required etc but there is also a section on entry for young people so it tells you what subjects you need to take to do a specific career.

www.fasttomato.com is an interactive careers quiz - young people answer 30 questions about their skills and interests and then at the end a list of jobs come up which match their skills so this can be useful to expand and develop career ideas.

Exam boards:

www.aqa.org.uk

www.ocr.org.uk

www.edexcel.org.uk

www.wjec.co.uk

To help you with your learning:

www.samlearning.com

LEARNER LOGINS

* Centre ID – RM8MS

* User ID – Date of Birth followed by two initials, first name then surname. For example: the User ID for David Jones, born 1st August 1985 would be 010885DJ

* Password – Initially same as User ID. Students can change this later and if students have previously changed their passwords the change will be retained.

Mathswatch can be accessed via the school website www.mayfieldschool.net and under Maths in *departments*. The log in details are;

Username: mayfield
Password: Mayfieldmaths

www.bbc.co.uk/schools/ks3bitesize/maths/

www.linguascope.co.uk (username: Mayfield, password: languages)

www.samlearning.co.uk (KS2, KS3)

www.bbc.co.uk/schools/gcsebitesize/french (that's for KS4 pupils)

www.bbc.co.uk/schools/revision

www.iw-chameleon.org

www.bized.co.uk

www.businesslink.org

www.statistics.gov.uk

www.britishcompanies.co.uk

http://www.aqa.org.uk/qual/newgcse/soc_sci/soc_index.php?id=12&prev=12

<http://atschool.eduweb.co.uk/barrycomp/bhs/gcse.htm>

<http://www.hewett.norfolk.sch.uk/curric/soc/index.htm>

<http://sixthsense.osfc.ac.uk/sociology/index.asp>

<http://www.statistics.gov.uk/>

<http://www.bbc.co.uk/schools/gcsebitesize/music/>

<http://www.musicatschool.co.uk/>

<http://www.edexcel.com/quals/gcse/gcse09/music/Pages/default.aspx>

<http://www.bbc.co.uk/>

<http://www.channel4.com/>

<http://www.telegraph.co.uk/>

<http://www.guardian.co.uk/>

<http://www.tes.co.uk/>

Example 1	A/B		C	D/E	
Every student will study:	Choose one from: Public Services (BTEC) Health & Social Care (DOUBLE)		Choose one from: Art Business & Communication	Choose one from: Construction Business & ICT (BTEC)	
	English Language		Accelerated Geography		
English Literature	Choose one from: Business & Communication Drama French Geography Accelerated History IT Media Sociology Spanish	Choose one from: Art Business & Communication Food Technology French Media PE Photography Resistant Materials Triple Science	Graphic Products History IT PE RE Spanish Textiles Urdu	Choose one from: Business & Communication Drama French Geography History Media Music (BTEC) RE Sociology	Choose one from: Art Business & Communication Drama Spanish History IT Media Triple Science
Maths					
Science					
PE					
Foundation Learning Tier	Combined Humanities	Language Skills	Study Support	IT (Foundation Level)	Asdan
	VIP				

Example 2	A/B		C	D/E	
<p>Every student will study:</p> <p>English Language</p>	<p>Choose one from:</p> <p>Public Services (BTEC)</p> <p>Health & Social Care (DOUBLE)</p>		<p>Choose one from:</p> <p>Art</p> <p>Business & Communication</p> <p>Accelerated Geography</p>	<p>Choose one from:</p> <p>Construction</p> <p>Business & ICT (BTEC)</p>	
<p>English Literature</p> <p>Maths</p> <p>Science</p> <p>PE</p>	<p>Choose one from:</p> <p>Business & Communication</p> <p>Drama</p> <p>French</p> <p>Geography</p> <p>Accelerated History</p> <p>IT</p> <p>Media</p> <p>Sociology</p> <p>Spanish</p>	<p>Choose one from:</p> <p>Art</p> <p>Business & Communication</p> <p>Food Technology</p> <p>French</p> <p>Media</p> <p>PE</p> <p>Photography</p> <p>Resistant Materials</p> <p>Triple Science</p>	<p>Graphic Products</p> <p>History</p> <p>IT</p> <p>PE</p> <p>RE</p> <p>Spanish</p> <p>Textiles</p> <p>Urdu</p>	<p>Choose one from:</p> <p>Business & Communication</p> <p>Drama</p> <p>French</p> <p>Geography</p> <p>History</p> <p>Media</p> <p>Music (BTEC)</p> <p>RE</p> <p>Sociology</p>	<p>Choose one from:</p> <p>Art</p> <p>Business & Communication</p> <p>Drama</p> <p>Spanish</p> <p>History</p> <p>IT</p> <p>Media</p> <p>Triple Science</p>
<p>Foundation Learning Tier</p>	<p>Combined Humanities</p>	<p>Language Skills</p>	<p>Study Support</p>	<p>IT (Foundation Level)</p>	<p>Asdan</p>
<p>VIP</p>					

Example 3	A/B		C	D/E	
<p>Every student will study:</p> <p>English Language</p> <p>English Literature</p> <p>Maths</p> <p>Science</p> <p>PE</p>	<p>Choose one from:</p> <p>Public Services (BTEC)</p> <p>Health & Social Care (DOUBLE)</p>		<p>Choose one from:</p> <p>Art</p> <p>Business & Communication</p> <p>Accelerated Geography</p>	<p>Choose one from:</p> <p>Construction</p> <p>Business & ICT (BTEC)</p>	
	A	B	Graphic Products	D	E
	<p>Choose one from:</p> <p>Business & Communication</p> <p>Drama</p> <p>French</p> <p>Geography</p> <p>Accelerated History</p> <p>IT</p> <p>Media</p> <p>Sociology</p> <p>Spanish</p>	<p>Choose one from:</p> <p>Art</p> <p>Business & Communication</p> <p>Food Technology</p> <p>French</p> <p>Media</p> <p>PE</p> <p>Photography</p> <p>Resistant Materials</p> <p>Triple Science</p>	<p>History</p> <p>IT</p> <p>PE</p> <p>RE</p> <p>Spanish</p> <p>Textiles</p> <p>Urdu</p>	<p>Choose one from:</p> <p>Business & Communication</p> <p>Drama</p> <p>French</p> <p>Geography</p> <p>History</p> <p>Media</p> <p>Music (BTEC)</p> <p>RE</p> <p>Sociology</p>	<p>Choose one from:</p> <p>Art</p> <p>Business & Communication</p> <p>Drama</p> <p>Spanish</p> <p>History</p> <p>IT</p> <p>Media</p> <p>Triple Science</p>
Foundation Learning Tier	Combined Humanities	Language Skills	Study Support	IT (Foundation Level)	Asdan
VIP					

Example 4	A/B		C	D/E	
Every student will study: English Language	Choose one from: Public Services (BTEC) Health & Social Care (DOUBLE)		Choose one from: Art Business & Communication Accelerated Geography	Choose one from: Construction Business & ICT (BTEC)	
English Literature Maths Science PE	A Choose one from: Business & Communication Drama French Geography Accelerated History IT Media Sociology Spanish	B Choose one from: Art Business & Communication Food Technology French Media PE Photography Resistant Materials Triple Science	C Graphic Products History IT PE RE Spanish Textiles Urdu	D Choose one from: Business & Communication Drama French Geography History Media Music (BTEC) RE Sociology	E Choose one from: Art Business & Communication Drama Spanish History IT Media Triple Science
Foundation Learning Tier	Combined Humanities	Language Skills	Study Support	IT (Foundation Level)	Asdan
VIP					

